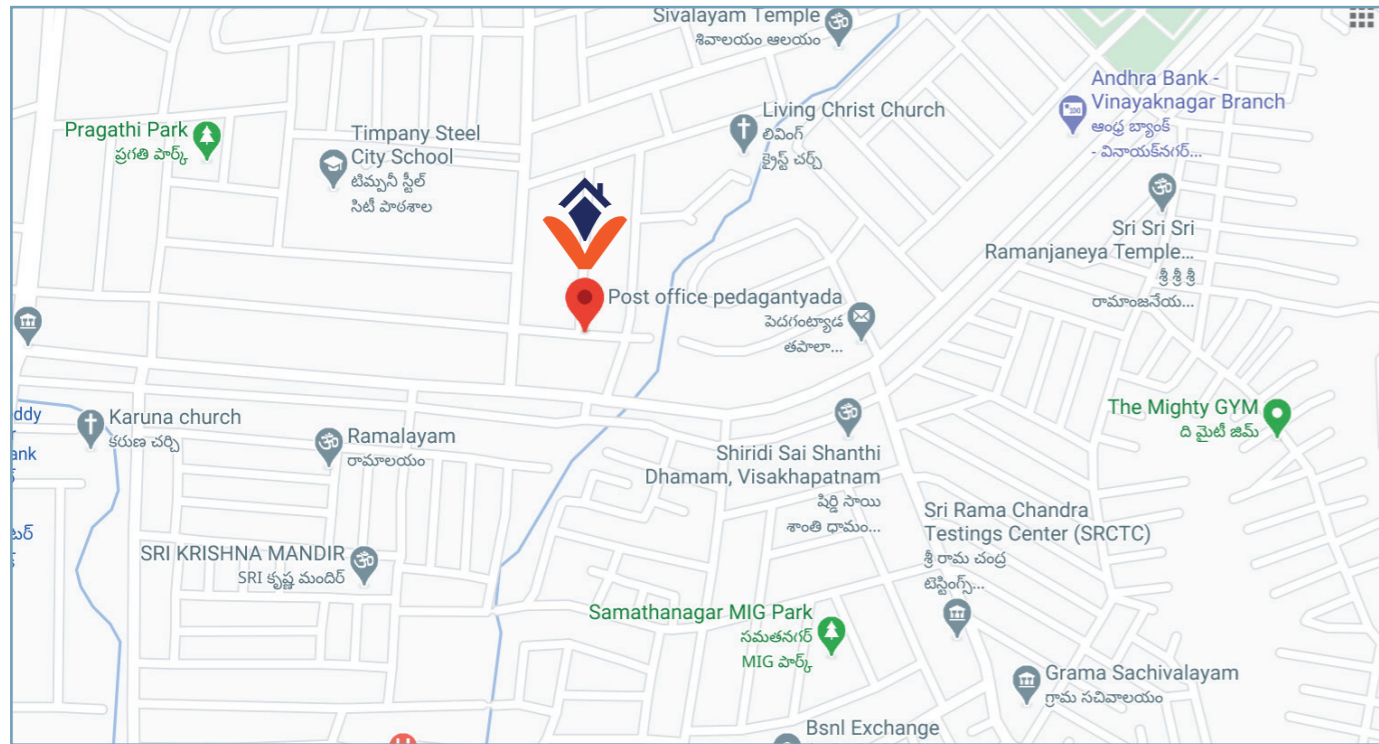


## ROUTE MAP



Architect  
**Krishna Mohan**  
 ARCHITECTS, ENGINEERS & VALUERS  
 Visakhapatnam.

Structural Engineer  
**Dr. K. RAMBABU**  
 M.E.(Strs.) Ph.D.(Strs), FIE  
 PROFESSOR



### VINDHYA INFRA PROJECTS

#### SITE & OFFICE ADDRESS

Opposite Timpany Steel City School ,Besides heritage departmental stores,  
 Vuda colony,Gajuwaka - 530 044 A,P, INDIA - 530 026.

**Mob:** +91 98854 27272 / 98853 27272 | **Email:** vindhyainfraprojects@gmail.com

**Note:** The details/Accessories shown in this brochure are Indicative and are subject to change without notice,and do not constitute a legal offering



# vindhya Castle

Luxury, Location, and Convenience.

Premium 2 BHK Flats  
 @ Vuda Colony, Gajuwaka





## PROJECT HIGHLIGHTS - VIP

- Total 10
- 1050sft Each Flat
- East & West Facings
- Stilt+Ground+4 Floors

## OUR SPECIFICATIONS



**STRUCTURE**  
SUPER STRUCTURE  
PLASTERING

Earth Quake resistant RCC framed structure.  
4" / 6" brick masonry Internal/External walls respectively either with Red brick.  
Double coat plastering with sponge finish for external walls and Single Coat plastering with sponge finish for Internal walls Plastering with quality cement.



**WOOD WORK**  
MAIN DOOR:-

Polish quality Teak wood frame and Shutter with good quality hardware along with godrej safety Locks.

INTERNAL DOORS:-  
WINDOWS

All internal door frames are TEAK WOOD with quality water proof laminate doors.  
Standard Company UPVC Windows and MS safety grills will be provided.

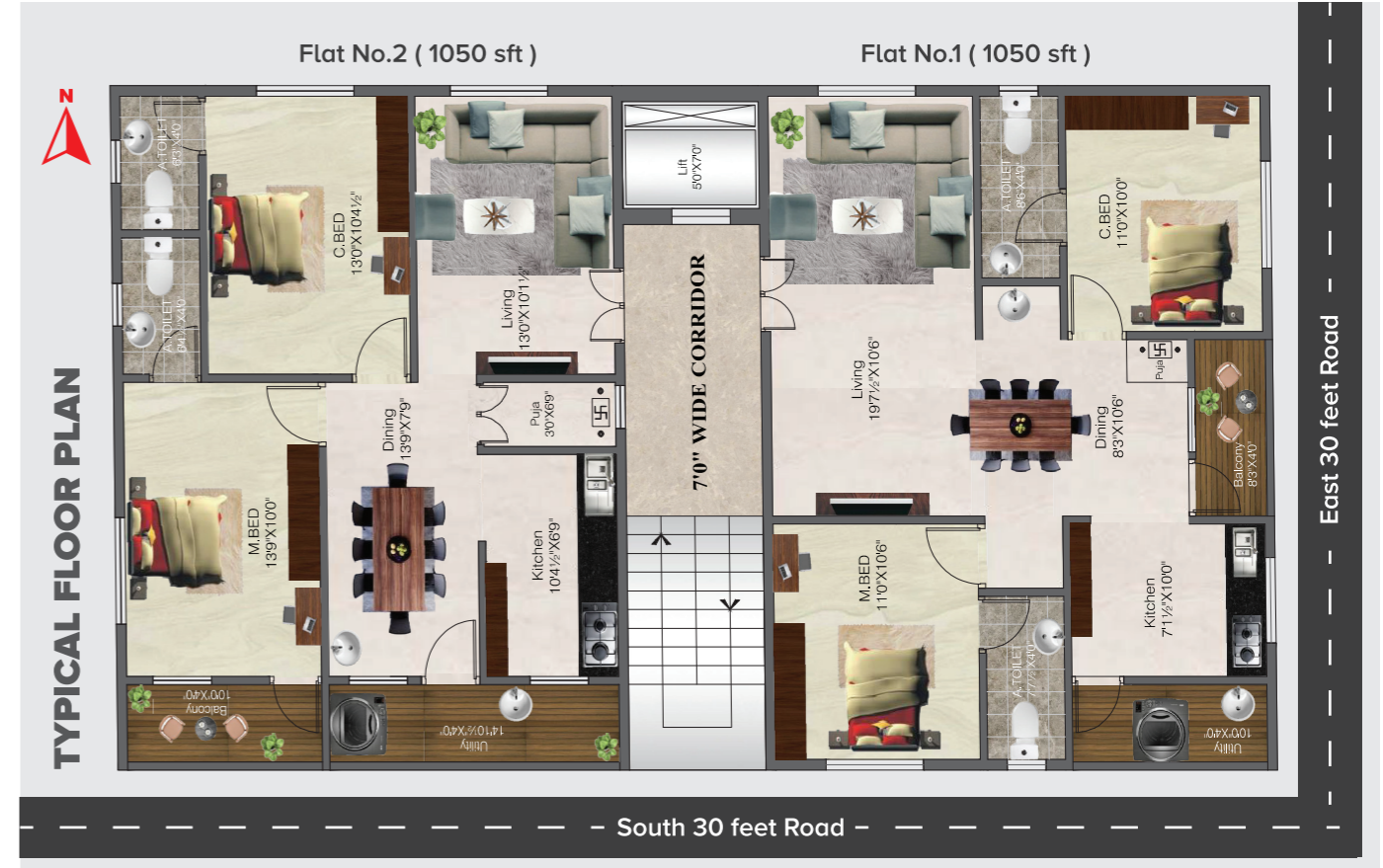


**FLOORING**  
Internal:-

Quality Branded premium Vitrified 800 mm X 800 mm size of Kajaria/RAK or equivalent make.Toilet and utility anti skid mat finish Vitrified tiles.

Common Area:-

Quality parking tiles for Stilt. Granite flooring for Corridors and Stair Case And SS railing.



**PAINTING**  
Internal:-

Smooth finishing with 2 coats of birla putty finish and 2 coats of ACRYLIC emulsion paints from Asian Paints.

External:-

Elevation sides 2 coats of Birla putty finish and ACRYLIC Emulsion from Asian paints.Other sides 2 coats weather proof paint reputed make.



**KITCHEN**

Polished black Granite platform with stainless steel sink will be provided Glazed tiles dado above granite kitchen platform upto 2 Ft Height.



**ELECTRICAL**

Fire resistant concealed copper wiring of Finolex or Havells or equivalent make.  
Modular Switches and sockets controlled by MCB & ELCB of Legrand Myrius Series or Havells or equivalent make.



**TOILETS**

Single Piece wall mounted EWCSs in master bathroom and Floor Mounted EWCSs of Hindware or equivalent make.  
Quality wash basins in all bathrooms of hindware or equivalent.  
Good quality CP fittings of jaquar or equivalent make provision of one geyser point in each toilet.  
Hot & cold water mixer with hand shower provision unit of jaquar make or equivalent in all toilets.  
Dadoing upto door height with designer tiles of reputed make.



**LIFT**

5 passenger Lift Johnson/Schindler/Kone Automatic Lifts with V3fARD.



**GENERATOR**

A) Generator Backup will be provided.  
B) Backup will be provided to Lift, Water motors, Common areas and all points in all Flats except AC and Geyser points.



**WATER**

Borewell for 24 hour ground water and Municipal water connection will be provided.